



LOGOS
SQUARE



The Pulse of Harmony





THE PULSE OF HARMONY

Situated at the heart of a vibrant district where business and retail activities flourish, this development embraces the dynamic rhythm of its surroundings. The Pulse of Harmony reflects the balance between the energy of a thriving urban hub and the refined comfort of an elegantly designed environment.

Carefully planned to harmonize movement, space, and experience, the development creates a setting where people can enjoy the vitality of the city while still feeling a sense of calm, order, and sophistication. It is a place where the pulse of urban life continues to beat, yet within an atmosphere of comfort and understated elegance.





WHERE HARMONY BEGINS

A vibrant mixed-use environment where living, lifestyle, and everyday convenience come together in balance. Surrounded by dynamic spaces for dining, leisure, and daily needs, the community creates a place where modern living flows naturally in harmony.

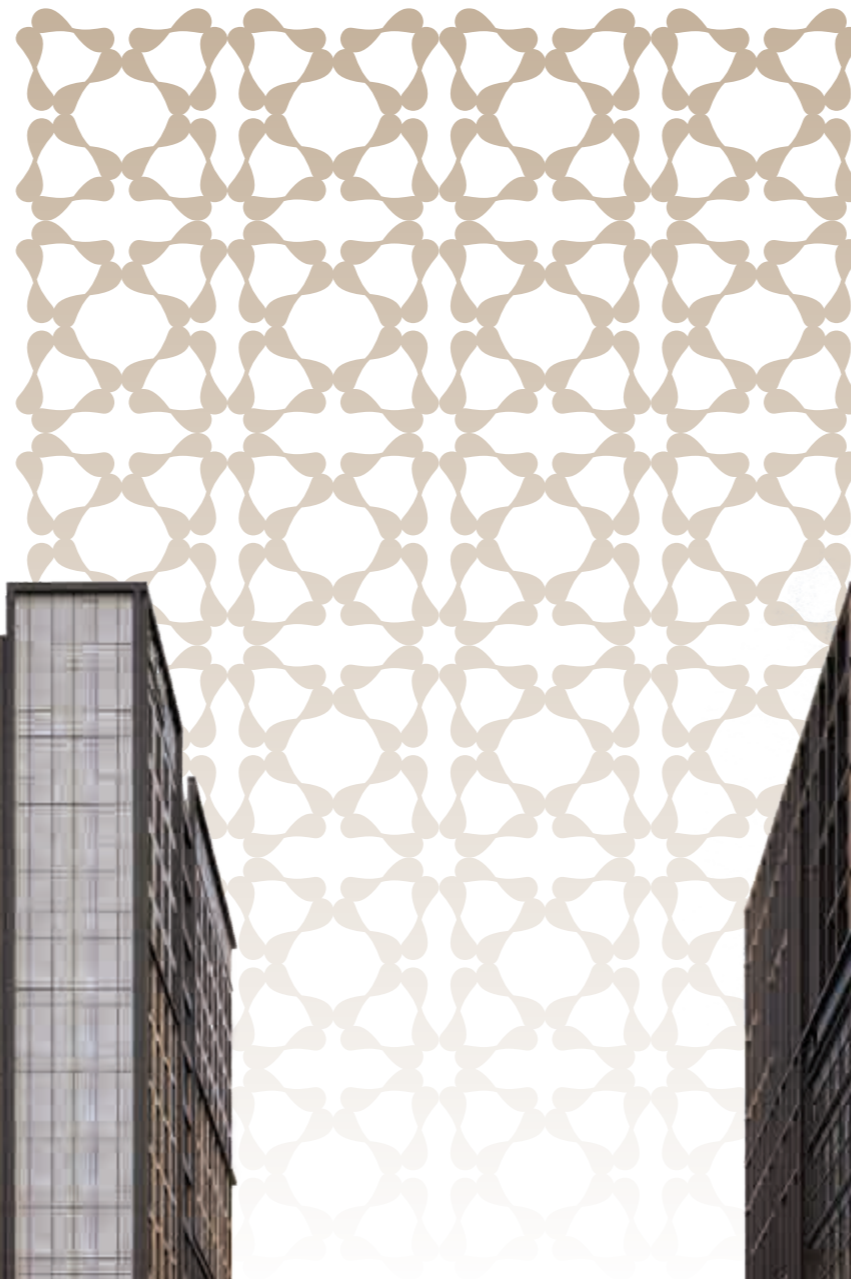






A MIXED-USE DEVELOPMENT

This thoughtfully planned mixed-use district brings together lifestyle, hospitality, and everyday convenience in one seamless environment. A lively lifestyle hub offers spaces for dining, leisure, and social gatherings, creating a vibrant atmosphere for the community.



Capri by Fraser is a modern serviced residence brand under Frasers Hospitality, offering stylish design, flexible living spaces, and premium comfort tailored for business and leisure travelers.

Fairfield by Marriott is a global hotel brand under Marriott International, offering modern design, trusted service standards, and essential comfort for both business and leisure travelers worldwide.

Top 100 Expresss Batam is a leading local retail brand offering a wide selection of daily necessities, quality products, and convenient shopping experiences across Batam.



ELEVATED SIMPLY LIVING

Elevated Simply Living reflects a way of life where everyday convenience meets refined design. Surrounded by an already thriving neighborhood, this development places lifestyle destinations, daily essentials, and workplaces within easy reach, allowing life to flow with greater ease and efficiency.

More than just accessibility, the concept elevates simplicity into something more sophisticated. Every element is thoughtfully curated to deliver a living experience that feels effortless yet distinguished, where convenience, comfort, and elegance come together to shape a lifestyle that is both practical and refined.



“

A place where modern living, lifestyle, and everyday convenience meet.



AMENITIES FOR EVERYDAY LIVING



SWIMMING POOL

A serene poolside escape for moments of calm.



GYM

A dynamic space to move, recharge, and stay active.



RESTAURANT

A welcoming space to dine, relax, and connect.



KIDS PLAYGROUND

A joyful space for play, laughter, and discovery.



**EVERYTHING
WITHIN
EASY REACH**

5
mins Grand Batam Mall

6
mins Awal Bros Hospital

7
mins Batam International
University

12
mins Harbour Bay International
Ferry terminal

20
mins Hang Nadim International
Airport



MASTERPLAN

LEGEND

- Business Loft
- Capri by Fraser
- Logos Square Residence
- TOP 100 Express
- Fairfield by Marriott
- Hotel Pipeline

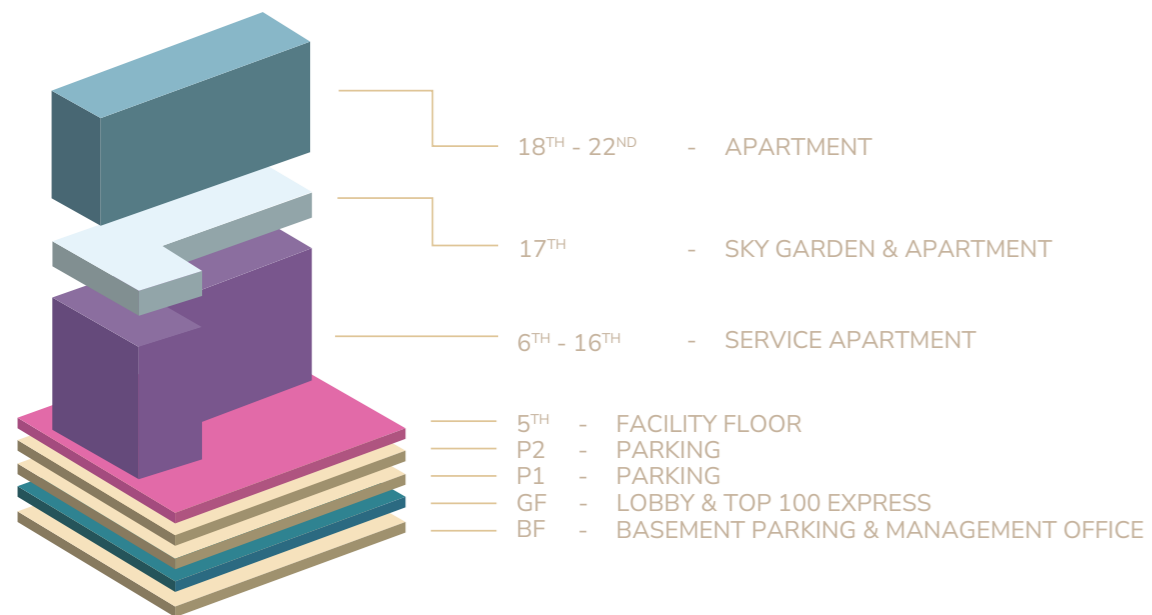


“

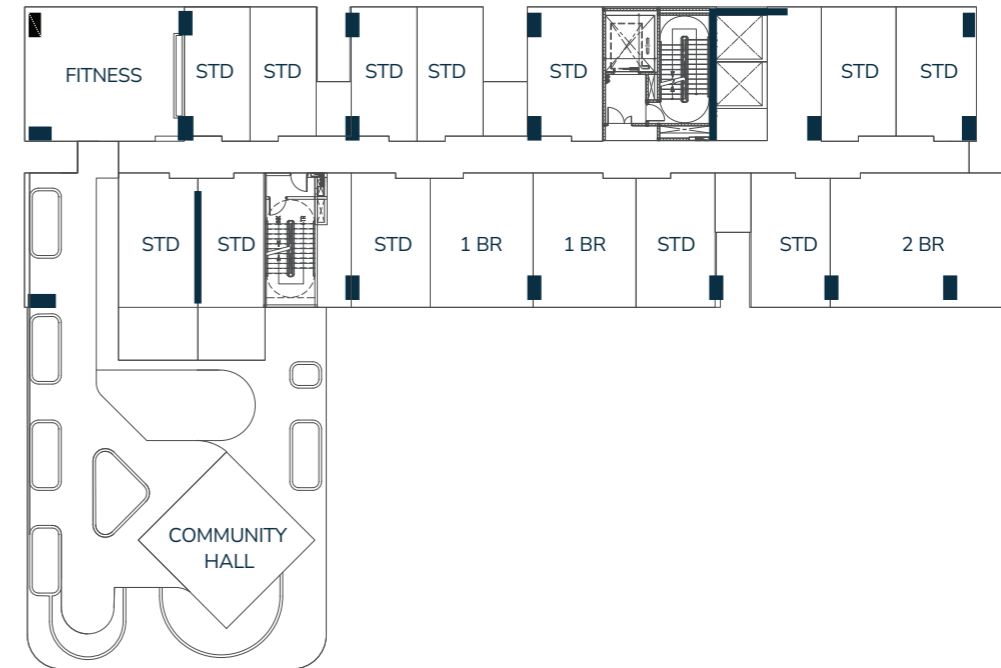
Where everyday moments turn into warm memories, and home becomes the heart of togetherness.

UNIT DISTRIBUTION

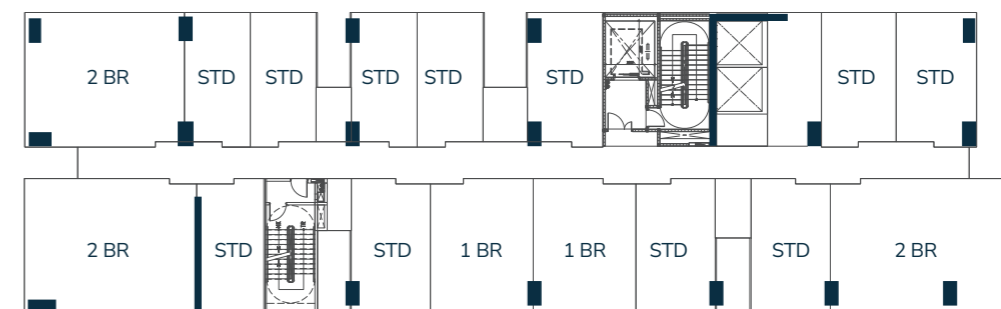
| | | | | | | | | |
|------------------------|----------|----------|----------|----------|----------|----------|----------|----------|
| CITY VIEW POOL VIEW | F22 - 17 | F22 - 15 | F22 - 11 | F22 - 09 | F22 - 07 | F22 - 05 | F22 - 03 | F22 - 01 |
| | F22 - 19 | F22 - 18 | F22 - 16 | F22 - 12 | F22 - 10 | F22 - 08 | F22 - 06 | F22 - 02 |
| CITY VIEW POOL VIEW | F21 - 17 | F21 - 15 | F21 - 11 | F21 - 09 | F21 - 07 | F21 - 05 | F21 - 03 | F21 - 01 |
| | F21 - 19 | F21 - 18 | F21 - 16 | F21 - 12 | F21 - 10 | F21 - 08 | F21 - 06 | F21 - 02 |
| CITY VIEW POOL VIEW | F20 - 17 | F20 - 15 | F20 - 11 | F20 - 09 | F20 - 07 | F20 - 05 | F20 - 03 | F20 - 01 |
| | F20 - 19 | F20 - 18 | F20 - 16 | F20 - 12 | F20 - 10 | F20 - 08 | F20 - 06 | F20 - 02 |
| CITY VIEW POOL VIEW | F19 - 17 | F19 - 15 | F19 - 11 | F19 - 09 | F19 - 07 | F19 - 05 | F19 - 03 | F19 - 01 |
| | F19 - 19 | F19 - 18 | F19 - 16 | F19 - 12 | F19 - 10 | F19 - 08 | F19 - 06 | F19 - 02 |
| CITY VIEW POOL VIEW | F18 - 17 | F18 - 15 | F18 - 11 | F18 - 09 | F18 - 07 | F18 - 05 | F18 - 03 | F18 - 01 |
| | F18 - 19 | F18 - 18 | F18 - 16 | F18 - 12 | F18 - 10 | F18 - 08 | F18 - 06 | F18 - 02 |
| CITY VIEW POOL VIEW | | F17 - 15 | F17 - 11 | F17 - 09 | F17 - 07 | F17 - 05 | F17 - 03 | F17 - 01 |
| | F17 - 18 | F17 - 17 | F17 - 16 | F17 - 12 | F17 - 10 | F17 - 08 | F17 - 06 | F17 - 02 |



TYPICAL FLOOR 17th Floor



TYPICAL FLOOR 18th ~ 22nd Floor





FLOORPLAN

TYPE STUDIO



SGA : 41.29 m²



Disclaimer: Floor plans, layouts, dimensions, and illustrations are provided for indicative and illustrative purposes only and may not be to scale. The developer reserves the right to amend, modify, or substitute the plans, specifications, and dimensions without prior notice, and the final completed units may differ from those shown.



TYPE STUDIO

Designed with modern simplicity in mind, this studio offers a cozy and functional environment perfect for a balanced and convenient lifestyle.



FLOORPLAN

TYPE STUDIO



SGA : 44.45 m²



Disclaimer: Floor plans, layouts, dimensions, and illustrations are provided for indicative and illustrative purposes only and may not be to scale. The developer reserves the right to amend, modify, or substitute the plans, specifications, and dimensions without prior notice, and the final completed units may differ from those shown.



TYPE STUDIO

A cozy studio residence with a balcony that brings light, openness, and a refreshing outdoor connection to everyday living.



FLOORPLAN

TYPE 1 BEDROOM



SGA : 56.84 m²



TYPE 1 BEDROOM

A refined one-bedroom living space designed for simplicity and comfort, where every corner supports a calm and balanced lifestyle.

Disclaimer: Floor plans, layouts, dimensions, and illustrations are provided for indicative and illustrative purposes only and may not be to scale. The developer reserves the right to amend, modify, or substitute the plans, specifications, and dimensions without prior notice, and the final completed units may differ from those shown.

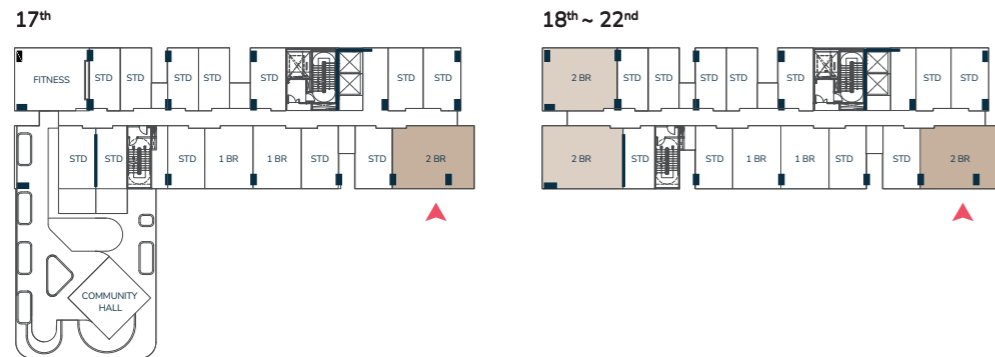


FLOORPLAN

TYPE 2 BEDROOM



SGA : 96.68 m²



TYPE 2 BEDROOM

Designed for modern family living, the two-bedroom layout provides generous space, natural light, and a welcoming atmosphere for moments that matter.

Disclaimer: Floor plans, layouts, dimensions, and illustrations are provided for indicative and illustrative purposes only and may not be to scale. The developer reserves the right to amend, modify, or substitute the plans, specifications, and dimensions without prior notice, and the final completed units may differ from those shown.

SPECIFICATIONS

Unit Architectural General Specifications

| | |
|-----------|--|
| Structure | : Reinforced concrete structure. |
| Wall | : Brick wall finished with plaster, skim coat, and paint. |
| Ceiling | : Gypsum ceiling with painted finish, cove curtain detail, |
| Window | : Aluminium windows. |
| Door | : Aluminium sliding door, solid engineering door, and honeycomb panel door. |

Kitchen and Bathroom Sanitary Fixtures

| | |
|--------------------------------|--------------------------|
| Washbasin and lavatory | : Dekkson or equivalent. |
| Closet / toilet bowl | : Dekkson or equivalent. |
| Shower head | : Dekkson or equivalent. |
| Jet spray / bidet | : Dekkson or equivalent. |
| Glass partition and glass door | : 8 mm tempered glass. |
| Kitchen sink | : Stainless steel. |

Wall and Floor Finishes

| | |
|--------------------|--|
| General wall | : Plastered and skim coated wall with painted finish |
| Kitchen backsplash | : Ceramic tiles 600 × 600 mm. |
| Bathroom | : Matte and non-slip homogeneous tiles 600 × 600 mm. |
| General flooring | : Homogeneous tiles 600 × 600 mm. |
| Balcony / terrace | : Matte and non-slip homogeneous tiles 600 × 600 mm. |





Developed by : PT. Tunas Realty

Head Office :

Kawasan Industri Tunas Bizpark
Blok 10J Belian, Kec. Batam Kota,
Batam Kepulauan Riau, Indonesia,
29444



TUNAS GROUP

Contact Us :


Hotline :


0852 7000 9870

E-mail :

logossquare@tunasproperty.com

Follow Us :

 [logos_square](#)

 [tunasproperty.com](#)

 [logossquare](#)

Disclaimer: All information, images, renderings, plans, prices, layouts, dimensions, specifications, and visual representations contained herein are provided solely for marketing and illustrative purposes and do not constitute any form of contractual offer or commitment. All details are subject to change, modification, or revision at any time without prior notice at the sole discretion of the developer, and may differ from the final built condition due to design development, construction requirements, regulatory approvals, or other considerations.



“

*A place where nature and everyday
living are in quiet harmony*



